

# Impact of the Thread Diameter on the Tribological Parameters of the Friction Lining for the Motor Vehicles Clutches

Simeon Simeonov, Slavco Cvetkov, Misko Dzidrov, Zlatko Sovreski, Sasko Dimitrov

**Abstract** - The clutch as a friction mechanism is placed between the engine and the gear box and it transfers the torque from the driving to the working part. It is expected from the clutch to have stable working and ecological characteristics. The main reasons for the working life shortage of the clutch are the occurrence of sliding in the process of engagement/disengagement, overloading of the clutch and the number of engagements. In order to increase the working life of the clutch a big effort has been done to improve the quality of friction linings. Most of the factors which impacts on the quality of the linings is the thread diameter of the lining. That is why the aim of the research is to determine the impact of the thread diameter on the lining tribological parameters over an extensive experimental testing.

**Index terms:** Friction clutches; Linings; Motor vehicles; Friction parameters; Yarn

## 1. INTRODUCTION

The main purpose of a clutch is to deliver a means to connect and disconnect the engine from the rest of the driveline, where it provides a mechanical coupling between the engine's flywheel and the transmission's input shaft. This transfers the power and torque from the engine to the transmission. Another function of the clutch is to absorb the powerful engine power pulsations so they are not transmitted through the driveline. This is all accomplished through careful design and usage of both static and kinetic friction. [3]

The Fig. 1 shows the section of the clutch with all the elements, where the clutch friction disc is the only part connected to the transmission and all rotational input and torque are delivered to the transmission through the disc. The importance of the friction comes when the spring pushes the pressure plate against the clutch friction disc, squeezing it between the pressure plate and the flywheel.

The principal function of a friction clutch is to convert kinetic energy to heat and then either to absorb or otherwise dissipate the heat while simultaneously, through friction, reducing the relative movement between the friction material and the part to which it is engaged. In order to achieve these objectives the necessary energy conversion must be accomplished with a minimum of wear on the contacting parts. [2] [3] [4] [5] [7]

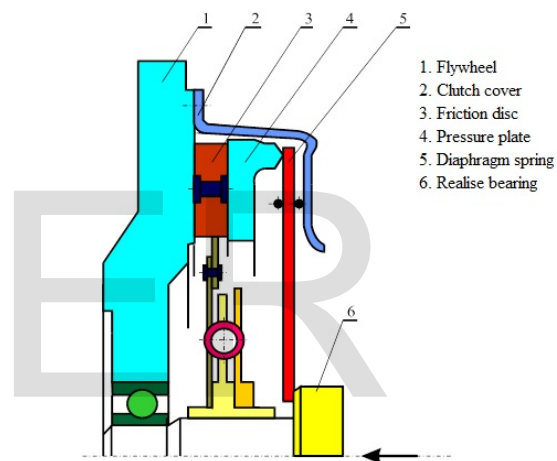


Fig.1 Friction clutch with the elements

The reliability of a clutch system is generally very high and is the result of the low failure rate of its parts but still there is need to increase the working life of the clutch, especially through improvements in the quality of friction linings. The main factor that impacts on the quality of the lining is the thread diameter. This research determines the impact of the thread diameter on the lining tribological parameters with extensive experiment.

The quality of the lining is expressed by:

- Tribologic parameters,
- The coefficient of friction, and
- The specific outwear of the lining.

The tribologic parameters depend upon the substances and their interrelation within the lining. The lining needs to provide for a stable coefficient of friction and a small-scale specific outwear, depending on the temperature, specific pressure between the

friction surfaces and the velocity of friction, in order to enable the transfer of the moment of motor to the transmission and to enable the vehicle to pass a longer path.

Factors that have an influence on the determination of the tribologic parameters of the linings:

- change in the ratio between the thread and the impregnation material;
- change in the diameter of the thread;
- change in the ratio of the modifiers;
- composition and way of weaving of the thread;
- way of knitting of the lining;

The friction material is one of the important features of the clutch lining. The friction material is composed of impregnate and thread.

The friction materials may generally be divided into two groups:

- asbestos (which is banned for use in multiple countries)
- non-asbestos materials:
  - synthetic organic fiber, constant temperature materials: fiber-kevler, nomex, kernal fiber etc;
  - inorganic chemical fiber: glass, ceramic, steel fiber);
  - carbon fiber;

There are two technologies for the manufacture of friction linings:

- adhesive means on the basis of caoutchouc and resins, are predominant;
- adhesive means on the basis of water dispersion (synthetic latex), are less frequently used;

Components of the lining can be divided into two parts: thread and impregnate (adhesive means on the basis of water dispersion).

- Impregnate composition is:
  - latex (main raw material);
  - networking;
  - fillers;
  - stabilizers;
  - modifiers etc.
- The thread is drawn:
  - glass,
  - organic materials (cotton, rayon, etc.),
  - metal (copper, brass)
- Relationship of thread and impregnate is:
  - thread (60-40)%,

- impregnate (40-60)%.

Both ways of obtaining linings have basically same structure, determined by four main components:

- thread (mesh)
- charger
- adhesion means and
- friction modifiers.

Thread is obtained by spinning of its components. The number of the torsion of one meter long this (100-250) **tex** for thin thread (1000÷2500) **tex**, for the thick thread (2700÷4500) **tex** the number of torsions (20-80). If in thread has more torsion than it receive less impregnate and vice-versa.

**Tex** is the weight of the thread length of one meter in grams (1200tex = 1200gr / m)

One of the factors that impacts on the tribological parameters of the lining is the diameter of thread. Increasing the thread diameters in right proportion with organic matter (but not the only way). [5] [6]

The aim of the research is to determine the impact of the thread diameter on the lining tribological parameters.

## 2. RESEARCH METHODOLOGY

Research methodology includes the study of the available knowledge and experience of clutch and lining manufacturers as well as the literature data. Own experimental research of the influence of the change of the thread diameter on the friction coefficient and specific lining outwear. Analysis of the results and conclusions.

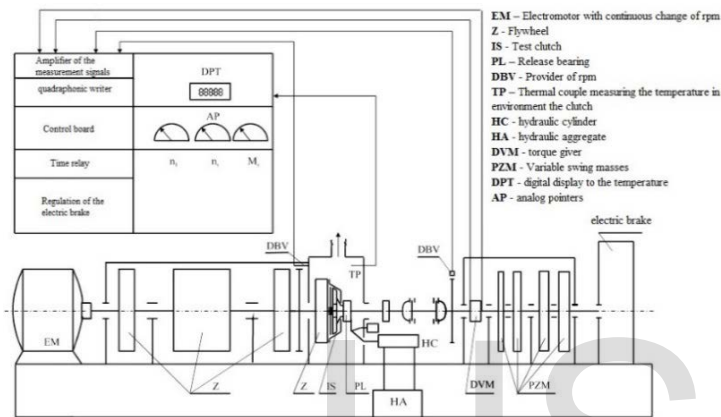
## 3. RESEARCH

In order to get the information about the impact of the thread diameter on the tribological parameters linings of the motor vehicle clutches, the following testing, based on the following approach, were done:[1] [5] [6] [8] [9]

- The tested linings are made of material produced by the adhesive means on the basis of water dispersion (synthetic latex),
- Linings with dimensions Ø350/Ø195/3.5
- The composition friction linings:
  - Thread (glass 70%, rayon 10%, copper 20%)60%, impregnate 40%, d=2mm
  - Thread (glass 65%, rayon 15%, copper 20%)58%, impregnate 42%, d=2.4mm

- Thread (glass 60%, rayon 20%, copper 20%)56%, impregnate 44%, d=3mm
  - Thread (glass 50%, rayon 30%, copper 20%)53%, impregnate 47%, d=3.7mm
  - Thread (glass 45%, rayon 35%, copper 20%)50%, impregnate 50%, d=4mm
- Fig. 2. Test benches

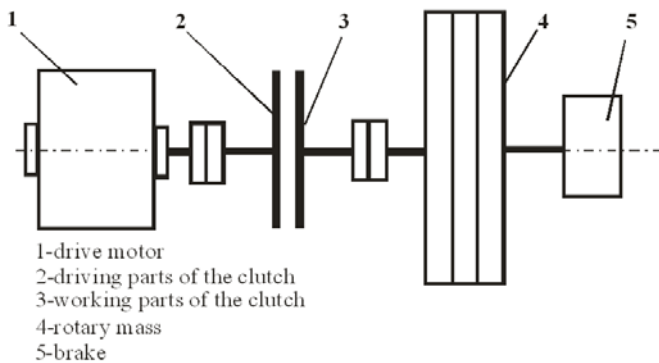
Test bench, there are 2 models of the test benches. Some work in conditions of braking, and the other test bench works with moving of certain rotary mass. The testing were done on the test bench that works



with moving of certain rotary mass (Fig.2.) Tests were performed on test benches for clutches that operates on the principles running rotating masses which generate torque equivalent to the moment of inertia of the vehicle whose clutch is tested.

Fig.2 Test bench

Based on capability analysis of the test bench which is a product of the company Fichtel Sacks - type K-D-14 - Germany (Fig.3a and Fig.3b), and on the products of



main lining manufactures it is adopted the test to be performed with dimensions  $\varnothing 350/\varnothing 195/3.5$ , often used in vehicles.

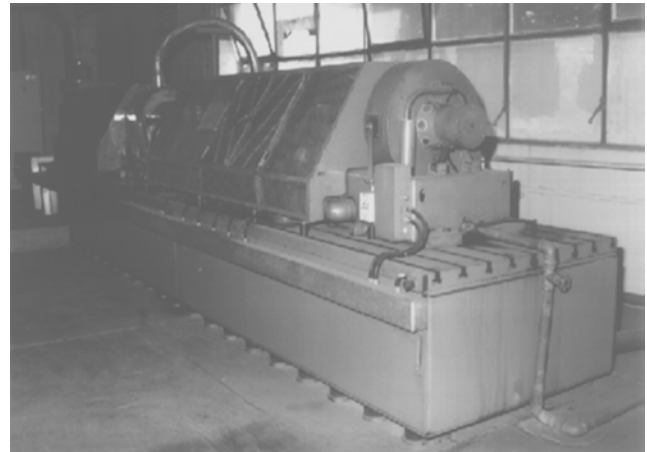


Fig. 3. Photography of test bench for friction clutches

Testing were performed in the following mode:

- number of the revolutions:  $n=1600$  rpm;
- inertial momentum of the rotating mass:  $J=10.22$  kgm<sup>2</sup>;
- specific workload:  $a=107$  J/cm<sup>2</sup>;
- engaging frequency :  $f=1.5$  1/min;
- number of cycles:  $N=1000$ ;

Test method:

- Friction linings are riveted on the disk and together with the clutch are mounted on the test bench.
- Friction linings are submitted to 500 cycles with 75 % contact surface of the total surface of linings.
- Dismantling of the friction disc and the clutch and the test bench.
- Dismantling of linings and disc.
- Measuring the thickness of each lining of 16 places (8 places evenly to the outer diameter, 8 places evenly to the inner diameter)
- Determination of the average thickness of the lining.
- Re-assembling of the linings with hard drive installation disk, clutch and the test bench.
- Fulfillment of the test with 1000, dismantling and measurement of linings (after linings outwear).

The 3 pairs of linings are examined.

The coefficient of friction is determined by the expression:

$$\mu = \frac{M}{z \cdot r_{sr} \cdot P} \quad (1)$$

**M [Nm]**- average torque clutch read from the diagram of the machine;

**z** - Number of friction surfaces ( $z=2$ );

**r<sub>sr</sub> [m]** - mean radius of the friction lining;

**P [N]** - pressing force of the clutch;

Where:

$$r_{sr} = \frac{1}{2} \cdot d_{sr} \text{ [m]} \quad (2)$$

$$d_{sr} = \frac{2}{3} \cdot \left( \frac{D^3 - d^3}{D^2 - d^2} \right) \text{ [m]} \quad (3)$$

**D [m]** - outer diameter lining;

**d [m]** - internal diameter lining;

Specific outwearing lining is determined by the expression:

$$g = \frac{\Delta b \cdot F}{A_{vk}} \text{ [cm}^3/10\text{MJ]} \quad (4)$$

**Δb [cm]** - outwear lining, measuring the difference in the thickness of both linings before and after the test, lining which has a greater difference multiplied by 2;

**F [cm<sup>2</sup>]** - surface lining;

**A<sub>vk</sub> [10MJ]** - total work being accomplished in the process of slipping clutch for one test;

$$A_{vk} = \sum_1^n A_{sr} \text{ [J]} \quad (5)$$

**A<sub>sr</sub> [J]** - average work of a cycle;

**n [-]** - number of cycles;

The work by slipping the clutch is determined by the expression:

$$A_{sr} = \frac{M_{sr} \cdot \omega \cdot t_{sr}}{2} \text{ [J]} \quad (7)$$

**M<sub>sr</sub> [Nm]** - medium torque, which is calculated as the average of the read values of mean friction moments recorded cycles of the machine diagram;

**t<sub>sr</sub> [s]** - average time of inclusion, which is calculated as the average value of the times read by every recorded cycle diagram of the machine.

**ω [1/s]** - Angular speed the hunted (working) part;

## 4. RESULTS

Results of the testing are presented in Table 1. (The average value of the examination of three pairs of coatings)

TABLE 1  
 The results of the testing linings

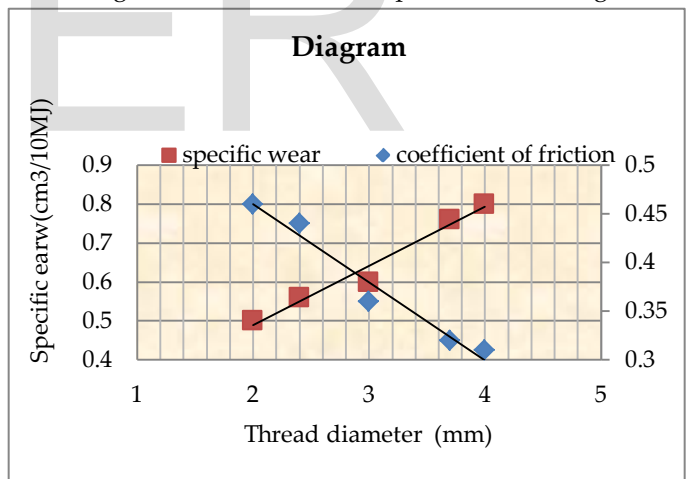
Thread diameter impregnate [mm]	Coefficient of friction μ	Coefficient of specific wear w [cm <sup>3</sup> /10MJ]
2	0.46	0.50
2.4	0.44	0.56
3	0.36	0.60
3.7	0.32	0.76
4	0.31	0.80

The relation of the coefficient of friction and the specific outwear with thread diameter ratio is presented in Fig. 4.

Fig. 4 Dependence on the linings tribological parameters from the diameter of thread

## 5. ANALYSIS AND CONCLUSION

Starting from the tests in dependence tribological



parameters of the thread diameter can give the following conclusions:

- Tests were performed on test benches for clutches, that operates on the principles running rotating masses;
- Testing were performed in the following mode: specific workload:  $a=107 \text{ J/cm}^2$ ;
- The bigger thread diameter the larger specific outwear, and the coefficient of friction are smaller;

- The smaller thread diameter the smaller specific outwear, and the coefficient of friction are bigger;
- These dependence are shown with a linear line:
- $Y = 0.151 * X + 0.181$  (specific wear)
- $Y = -0.083 * X + 0.619$  (coefficient of friction)
- Performed testing of methodological approach, given an opportunity for further research in the area of the impact of the elements of the structure of the material for friction linings.

## REFERENCES

- [1] Bratcu O., Spănu C., *Contributions to state concept definition for sliding tribosystems material characterisation. The annals of University "DUNĂREA DE JOS" of Galati fascicle VIII, Tribology. 2003 ISSN 1221-4590*
- [2] Danev D., *"Research of the working loads on the friction clutch of the passenger cars", PhD thesis, Belgrade 1978.*
- [3] Jones T. L., *2010 Handbook of Reliability Prediction Procedures for Mechanical Equipment, Chapter 12, Brakes and clutches, 12, 13, 14.*
- [4] Nunney J., *Light & Heavy Vehicle Technology, London, 2001*
- [5] Author., *"Influence of the components of friction material linings structure on to the performances of friction clutch for heavy motor vehicles", PhD thesis, Skopje 1999.*
- [6] Author., Author 2., Author 3., Author 4., *Influence of the number of the clutch engagement on the wearing of triction linings of clutches for motor vehicles, The Journal Tehnicki Vjesnik/Technical Gazette, publishes scientific and professional papers in the area of mechanical, electrical and civil engineering, S. Brod, Croatia, Art.No: 1902-12 (2012).*
- [7] Stoakes G., Sykes E., Whittaker C., *2011, Level 2 Principles of Light Vehicle Maintenance and Repair, Heinemann*
- [8] Urbakh M., Klafter J., Gourdon D. & Israelachvili J., *The nonlinear armature coffriction. 2004 Nature Publishing Group. June 2004; 10.1038/nature 02750*
- [9] Varidaj A. *Engagement characteristics of friction pad for commercial vehicle clutch system. SadhanaVol.35, Part 5, October 2010, pp. 585-595. Indian Academy of Sciences.*

IJSER